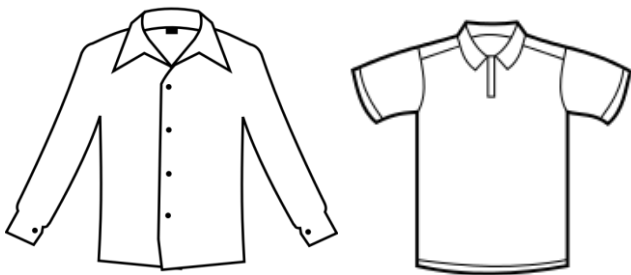


Rotherham Aspire Uniform Guidelines

As we believe that our pupils need to feel welcome in our school, we are not as stringent about our uniform requirements. However, because our aspirations are always to return pupils to a mainstream setting, we believe that maintaining a link with the mainstream uniform better enables pupils to transition, if a transition is required. Uniform is available for KS1, 2 and 3.

Secondary (Years 7, 8 and 9) Uniform

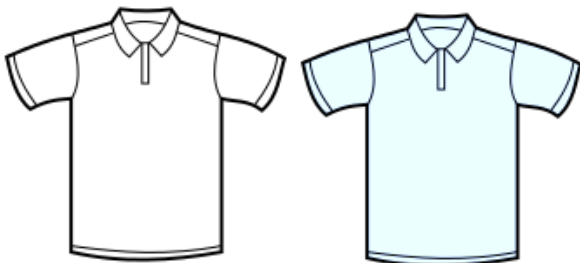


White long/short sleeve shirt or white polo shirt



Black trousers or No logo black joggers

Primary (KS1 through to Year 6) Uniform



White or Blue polo shirt



Black trousers or No logo black joggers

Footwear (All pupils)

Flat Shoes or Trainers (Any colour accepted)